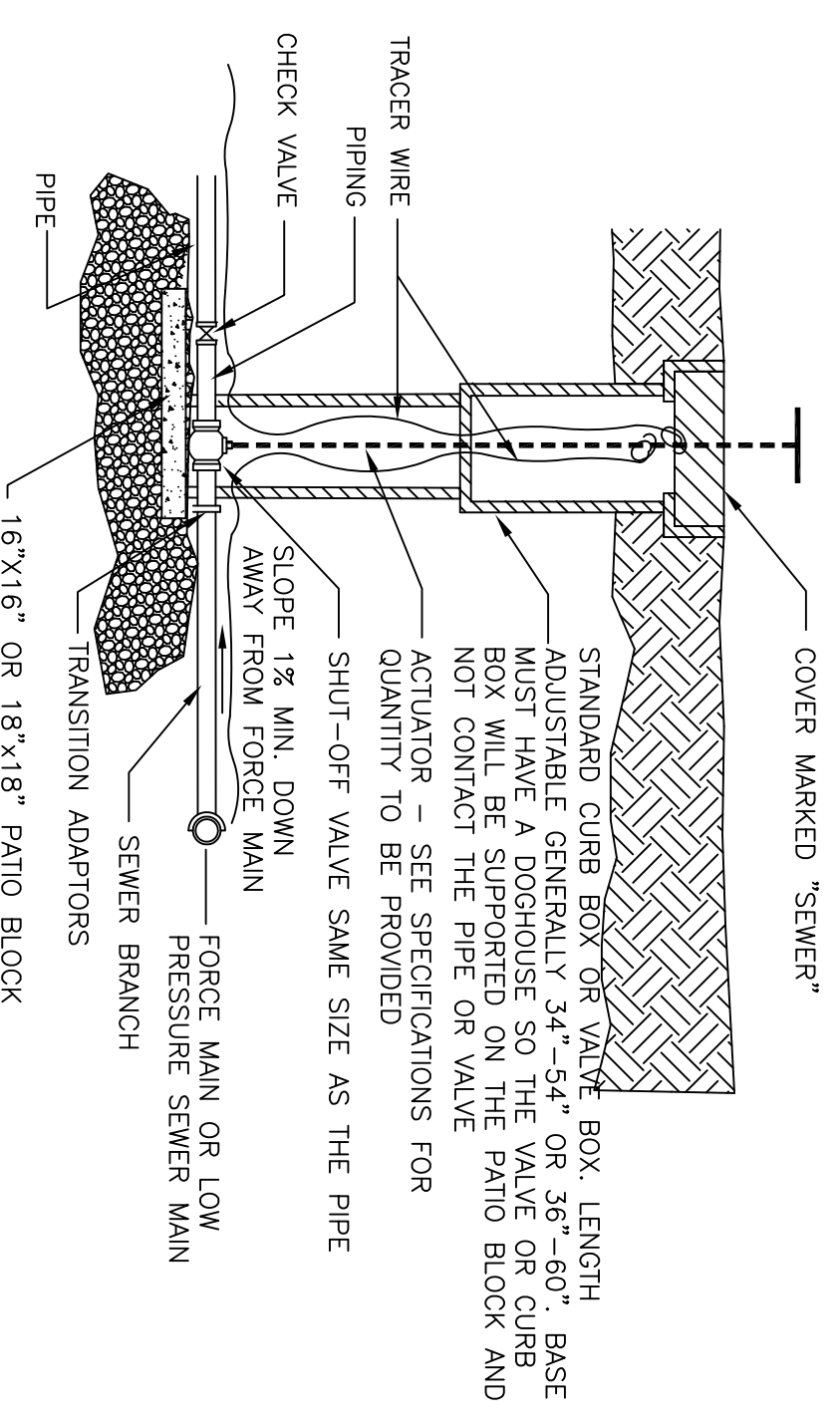
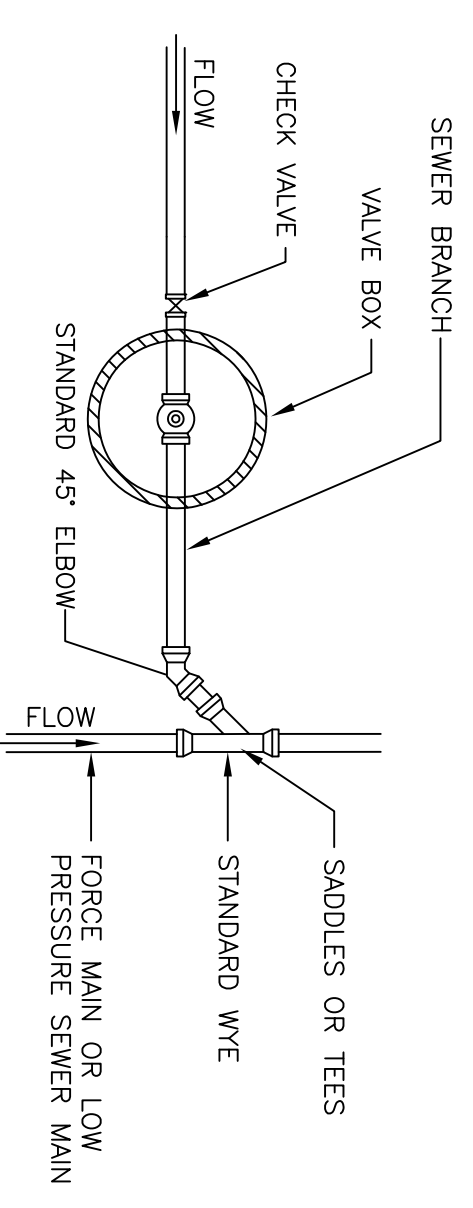


NOTE:
 WYES, BENDS, CAPS AND OTHER FITTINGS,
 AS WELL AS PRESSURE SEWER LATERAL
 PIPING, SHALL BE POSITIVELY RESTRAINED
 TO WITHSTAND 150 P.S.I. PRESSURE.



DRAWING NOT TO SCALE

THIS PRINT IS AND CONTAINS PROPRIETARY INFORMATION OWNED EXCLUSIVELY BY CRANE PUMPS & SYSTEMS, INC. THIS RESTRICTION INCLUDES, BUT IS NOT LIMITED TO THE CONDITION THAT THIS PRINT WILL ONLY BE USED AS A RECORD OR TO IDENTIFY OR INSPECT PARTS OR FOR OTHER INFORMATION PURPOSES, AND WILL NOT BE USED TO MANUFACTURE OR PROCURE THE MANUFACTURE OF THE PARTS SHOWN IN THIS PRINT BY ANY OTHER SOURCE THAN CRANE PUMPS & SYSTEMS, INC.

THIS DRAWING IS APPROVED FOR UNCONTROLLED DISTRIBUTION
 AS A RESULT OF BARNES CONSTANT PRODUCT IMPROVEMENT PROGRAM, PRODUCT CHANGES MAY OCCUR. AS SUCH, BARNES RESERVES THE RIGHT TO CHANGE PRODUCT WITHOUT PRIOR WRITTEN NOTIFICATION
 WWW.BARNESPUMPS.COM

TITLE		CAGE NO	
TYPICAL PRESSURE SEWER BRANCH WITH SHUT-OFF AND CHECK VALVE		96046	
DWG NO	REV	CRANE PUMPS & SYSTEMS	
CD141832	A	BARNES®	
SHEET 1 OF 1		PUMPS & SYSTEMS	