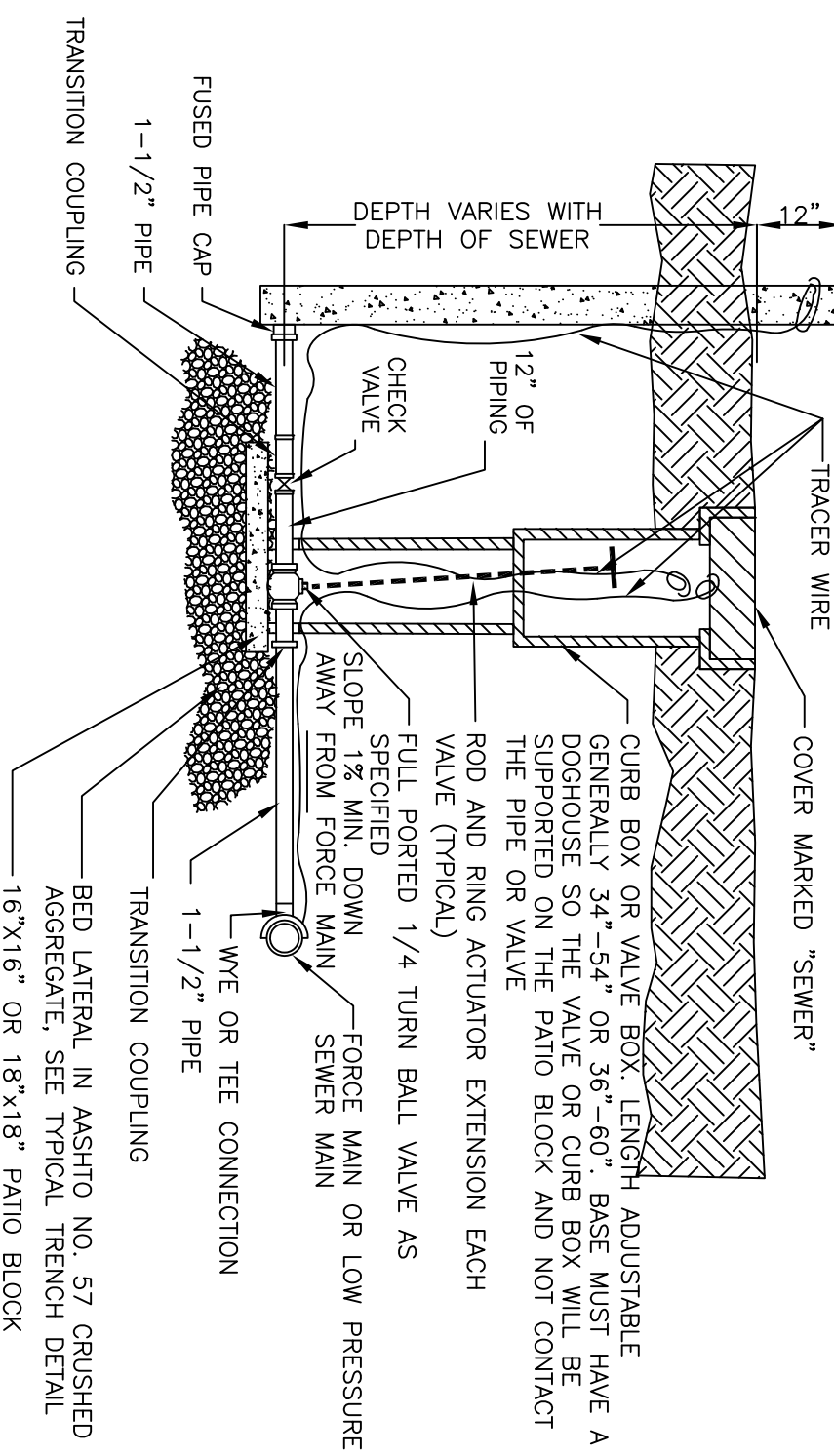


NOTE:
 WYES, BENDS, CAPS AND OTHER FITTINGS,
 AS WELL AS PRESSURE SEWER LATERAL PIPING,
 SHALL BE POSITIVELY RESTRAINED TO WITHSTAND
 150 P.S.I. PRESSURE



- NOTES:**
1. EXTEND LATERAL TO PROPERTY LINE TYPICALLY IN CORRIDOR INDICATED ON RIGHT-OF-WAY OBTAINED BY MUNICIPALITY.
 2. CONTACT PROPERTY OWNER AHEAD OF LAYING PRESSURE SEWER TO DETERMINE THE MOST CONVENIENT LOCATION OF CONNECTION AND LATERAL LINE.

DRAWING NOT TO SCALE

THIS PRINT IS AND CONTAINS PROPRIETARY INFORMATION OWNED EXCLUSIVELY BY CRANE PUMPS & SYSTEMS, INC. THIS RESTRICTION INCLUDES, BUT IS NOT LIMITED TO THE CONDITION THAT THIS PRINT WILL ONLY BE USED AS A RECORD OR TO IDENTIFY OR INSPECT PARTS OR FOR OTHER INFORMATION PURPOSES, AND WILL NOT BE USED TO MANUFACTURE OR PROCURE THE MANUFACTURE OF THE PARTS SHOWN IN THIS PRINT BY ANY OTHER SOURCE THAN CRANE PUMPS & SYSTEMS, INC.

THIS DRAWING IS APPROVED FOR UNCONTROLLED DISTRIBUTION
 AS A RESULT OF BARNES CONSTANT PRODUCT IMPROVEMENT PROGRAM, PRODUCT CHANGES MAY OCCUR. AS SUCH, BARNES RESERVES THE RIGHT TO CHANGE PRODUCT WITHOUT PRIOR WRITTEN NOTIFICATION
 WWW.BARNESPUMPS.COM

TITLE	RECOMMENDED RESIDENTIAL SERVICE CONNECTION	CAGE NO	96046
DWG NO	CD141834	REV	A
SHEET	1 OF 1		