

- NOTES:
1. WYES, BENDS, CAPS AND OTHER FITTINGS, AS WELL AS PRESSURE SEWER LATERAL PIPING, SHALL BE POSITIVELY RESTRAINED TO WITHSTAND 150 P.S.I. PRESSURE.
 2. ALL CONNECTIONS FOR HDPE PIPE SHALL BE ELECTROFUSED OR BUTT WELDED, TYP.
 3. ALL PIPING, FITTINGS, VALVES AND OTHER COMPONENTS SHALL BE CONSIDERED NEW UNLESS NOTED OTHERWISE.

THIS DRAWING IS APPROVED FOR UNCONTROLLED DISTRIBUTION

TITLE

NEW PRESSURE SEWER BRANCH CONNECTION
TO EXISTING FORCE MAIN OR LOW PRESSURE SEWER

CAGE NO

96046

THIS PRINT IS AND CONTAINS PROPRIETARY INFORMATION OWNED EXCLUSIVELY BY CRANE PUMPS & SYSTEMS, INC. THIS RESTRICTION INCLUDES, BUT IS NOT LIMITED TO THE CONDITION THAT THIS PRINT WILL ONLY BE USED AS A RECORD OR TO IDENTIFY OR INSPECT PARTS OR FOR OTHER INFORMATION PURPOSES, AND WILL NOT BE USED TO MANUFACTURE OR PROCURE THE MANUFACTURE OF THE PARTS SHOWN IN THIS PRINT BY ANY OTHER SOURCE THAN CRANE PUMPS & SYSTEMS, INC.

AS A RESULT OF BARNES CONSTANT PRODUCT IMPROVEMENT PROGRAM, PRODUCT CHANGES MAY OCCUR. AS SUCH, BARNES RESERVES THE RIGHT TO CHANGE PRODUCT WITHOUT PRIOR WRITTEN NOTIFICATION

WWW.BARNESPUMPS.COM

SHEET 1 OF 1

DWG NO

DRAWING NO.

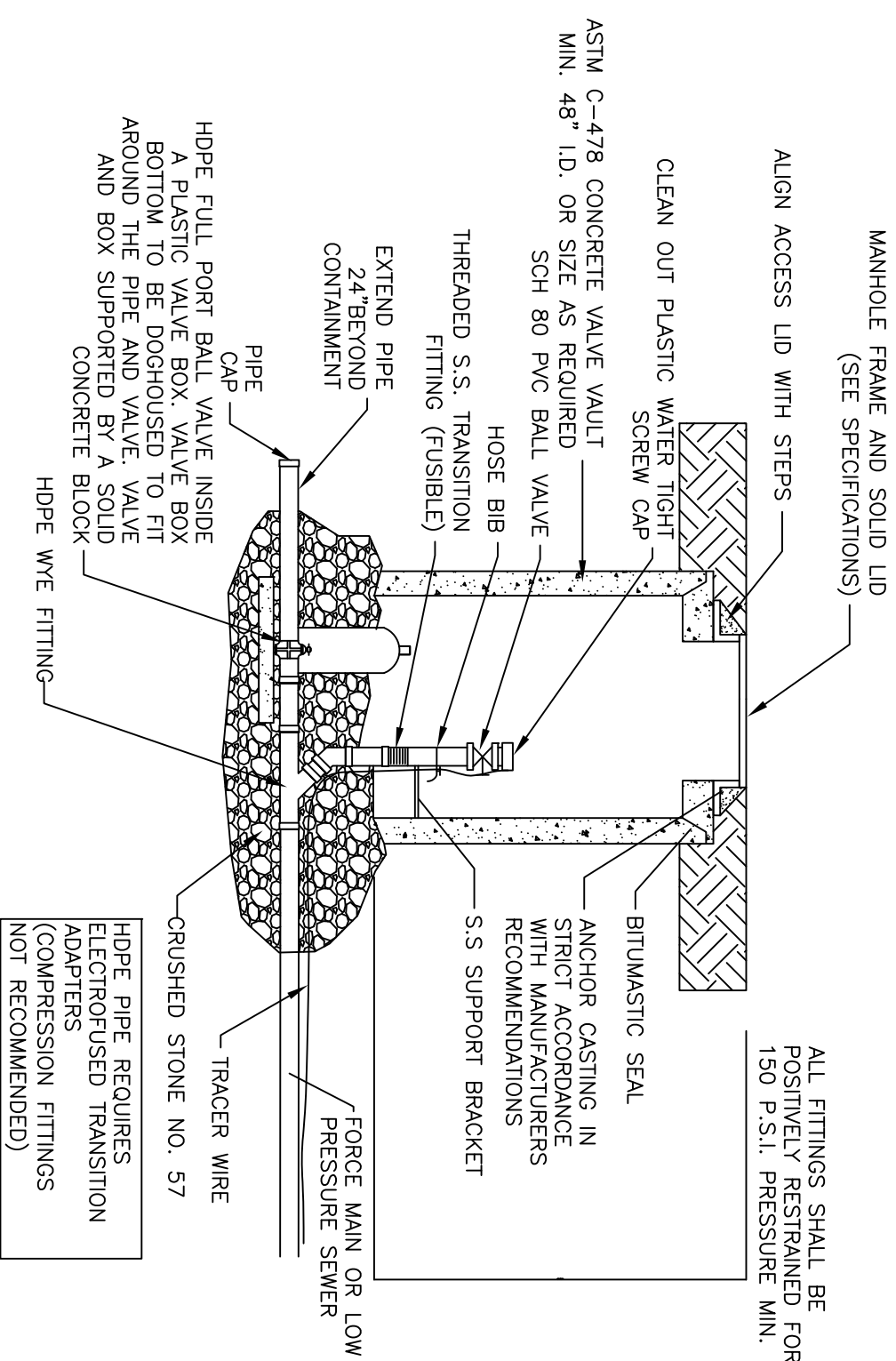
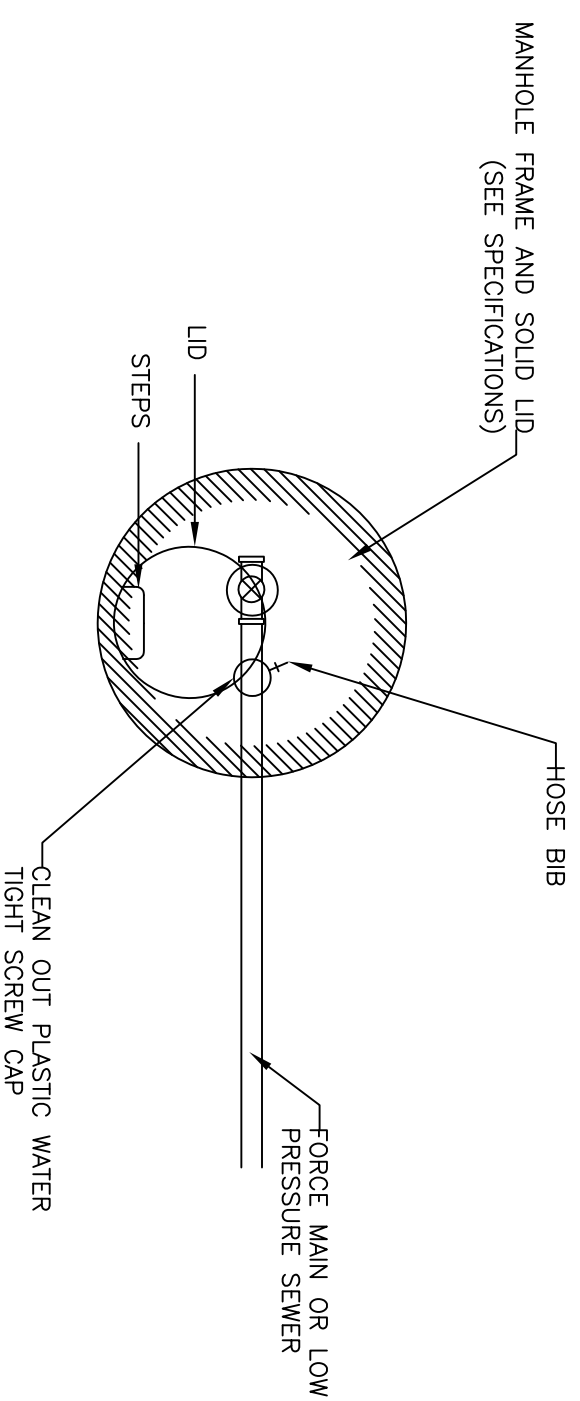
REV

A

CRANE

PUMPS & SYSTEMS

BARNES



HDPE PIPE REQUIRES ELECTROFUSED TRANSITION ADAPTERS (COMPRESSION FITTINGS NOT RECOMMENDED)

THIS PRINT IS AND CONTAINS PROPRIETARY INFORMATION OWNED EXCLUSIVELY BY CRANE PUMPS & SYSTEMS, INC. THIS RESTRICTION INCLUDES, BUT IS NOT LIMITED TO THE CONDITION THAT THIS PRINT WILL ONLY BE USED AS A RECORD OR TO IDENTIFY OR INSPECT PARTS OR FOR OTHER INFORMATION PURPOSES, AND WILL NOT BE USED TO MANUFACTURE OR PROCURE THE MANUFACTURE OF THE PARTS SHOWN IN THIS PRINT BY ANY OTHER SOURCE THAN CRANE PUMPS & SYSTEMS, INC.

THIS DRAWING IS APPROVED FOR UNCONTROLLED DISTRIBUTION

AS A RESULT OF BARNES CONSTANT PRODUCT IMPROVEMENT PROGRAM, PRODUCT CHANGES MAY OCCUR. AS SUCH, BARNES RESERVES THE RIGHT TO CHANGE PRODUCT WITHOUT PRIOR WRITTEN NOTIFICATION

WWW.BARNESPUMPS.COM

SHEET 1 OF 1

TITLE

TERMINAL CLEANOUT (PRESSURE)

CAGE NO

96046

DWG NO

DRAWING NO.

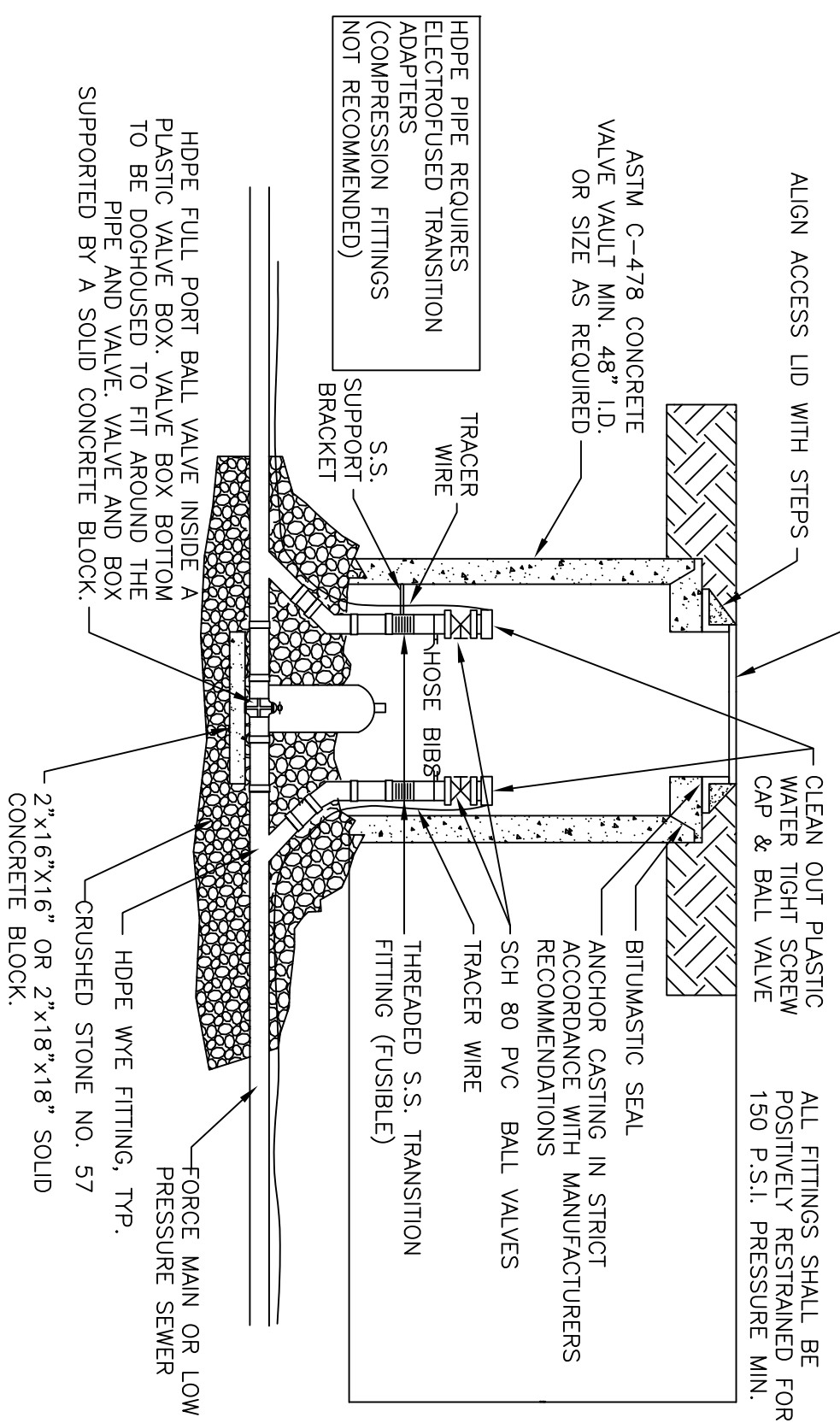
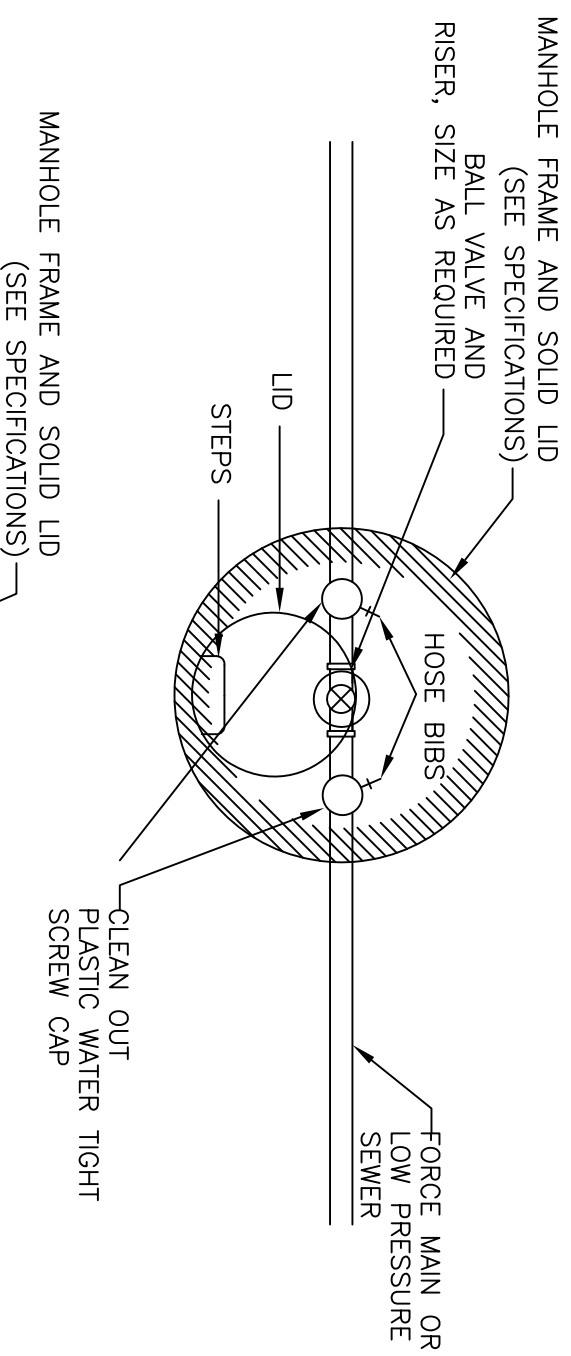
REV

A

CRANE®

PUMPS & SYSTEMS

BARNES®



THIS PRINT IS AND CONTAINS PROPRIETARY INFORMATION OWNED EXCLUSIVELY BY CRANE PUMPS & SYSTEMS, INC. THIS RESTRICTION INCLUDES, BUT IS NOT LIMITED TO THE CONDITION THAT THIS PRINT WILL ONLY BE USED AS A RECORD OR TO IDENTIFY OR INSPECT PARTS OR FOR OTHER INFORMATION PURPOSES, AND WILL NOT BE USED TO MANUFACTURE OR PROCURE THE MANUFACTURE OF THE PARTS SHOWN IN THIS PRINT BY ANY OTHER SOURCE THAN CRANE PUMPS & SYSTEMS, INC.

THIS DRAWING IS APPROVED FOR UNCONTROLLED DISTRIBUTION

TITLE

INLINE DOUBLE CLEANOUT (PRESSURE)

CAGE NO

96046

AS A RESULT OF BARNES CONSTANT PRODUCT IMPROVEMENT PROGRAM, PRODUCT CHANGES MAY OCCUR. AS SUCH, BARNES RESERVES THE RIGHT TO CHANGE PRODUCT WITHOUT PRIOR WRITTEN NOTIFICATION

DWG NO

DRAWING NO.

REV

A



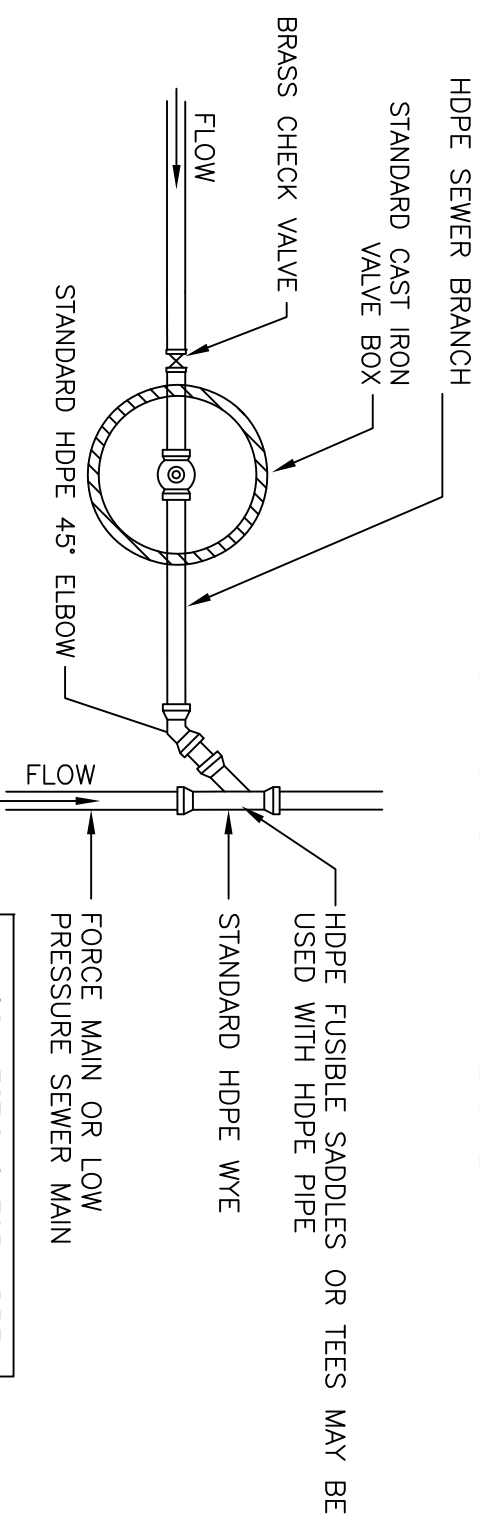
PUMPS & SYSTEMS



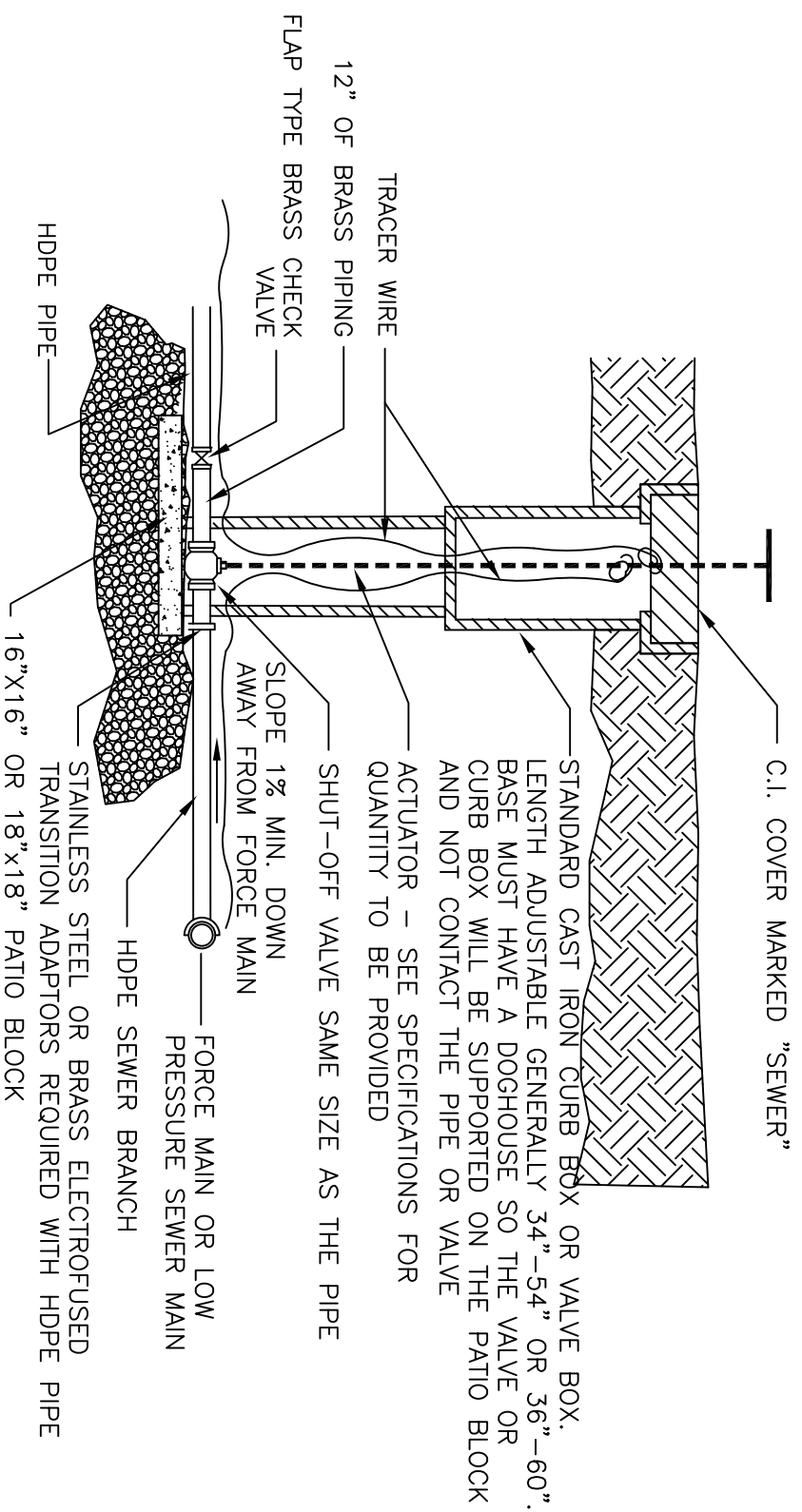
WWW.BARNESPUMPS.COM

SHEET 1 OF 1

NOTE:
 WYES, BENDS, CAPS AND OTHER FITTINGS,
 AS WELL AS PRESSURE SEWER LATERAL
 PIPING, SHALL BE POSITIVELY RESTRAINED
 TO WITHSTAND 150 P.S.I. PRESSURE.



ALL CONNECTIONS FOR HDPE
 PIPE SHALL BE ELECTROFUSED
 OR BUTT WELDED (TYP.)



THIS PRINT IS AND CONTAINS PROPRIETARY INFORMATION OWNED EXCLUSIVELY BY CRANE PUMPS & SYSTEMS, INC. THIS RESTRICTION INCLUDES, BUT IS NOT LIMITED TO THE CONDITION THAT THIS PRINT WILL ONLY BE USED AS A RECORD OR TO IDENTIFY OR INSPECT PARTS OR FOR OTHER INFORMATION PURPOSES, AND WILL NOT BE USED TO MANUFACTURE OR PROCURE THE MANUFACTURE OF THE PARTS SHOWN IN THIS PRINT BY ANY OTHER SOURCE THAN CRANE PUMPS & SYSTEMS, INC.

THIS DRAWING IS APPROVED FOR UNCONTROLLED DISTRIBUTION

AS A RESULT OF BARNES CONSTANT PRODUCT IMPROVEMENT PROGRAM, PRODUCT CHANGES MAY OCCUR. AS SUCH, BARNES RESERVES THE RIGHT TO CHANGE PRODUCT WITHOUT PRIOR WRITTEN NOTIFICATION

WWW.BARNESPUMPS.COM SHEET 1 OF 1

TITLE

TYPICAL PRESSURE SEWER BRANCH
 WITH SHUT-OFF AND CHECK VALVE

CAGE NO

96046

DWG NO

DRAWING NO.

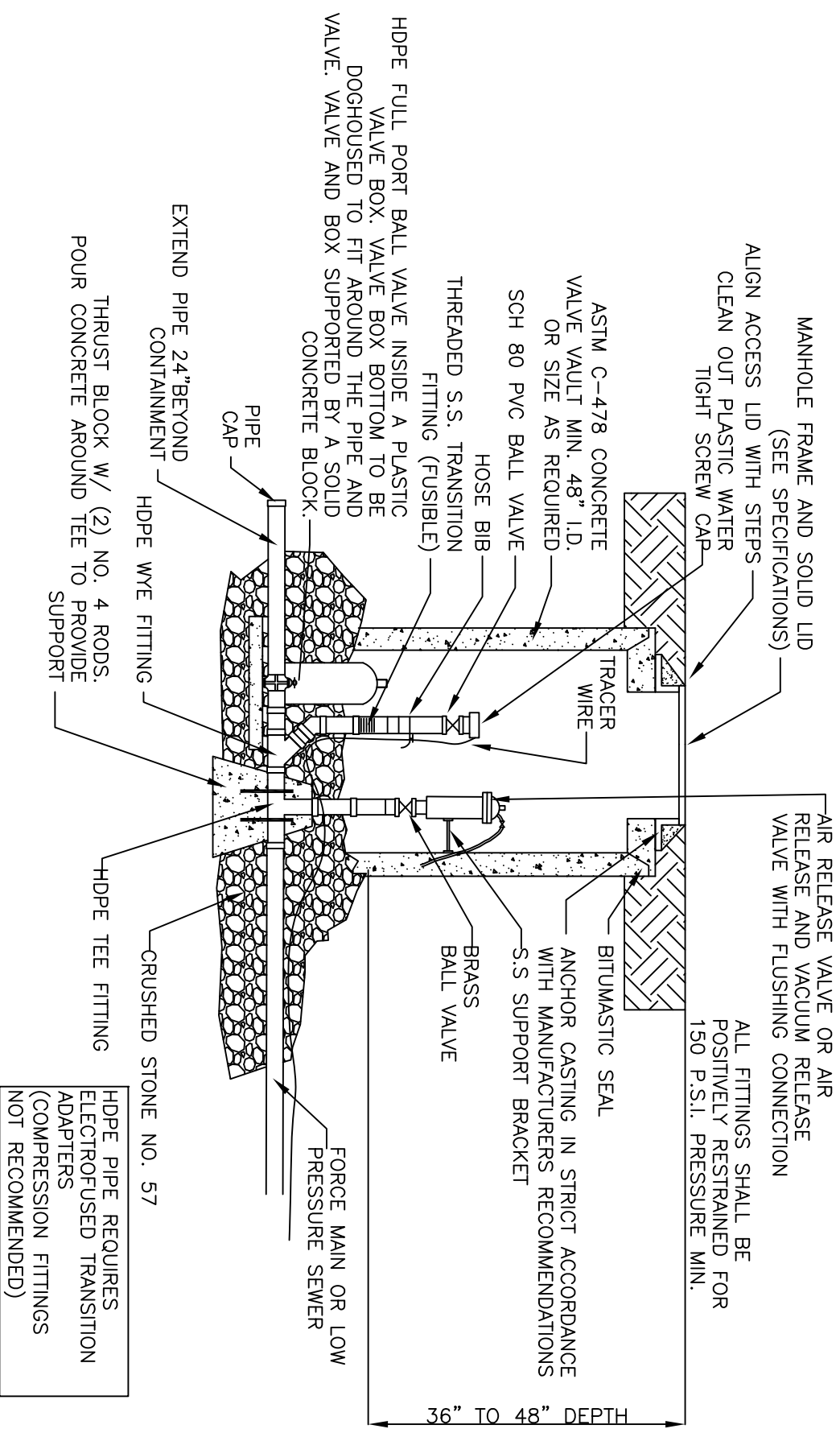
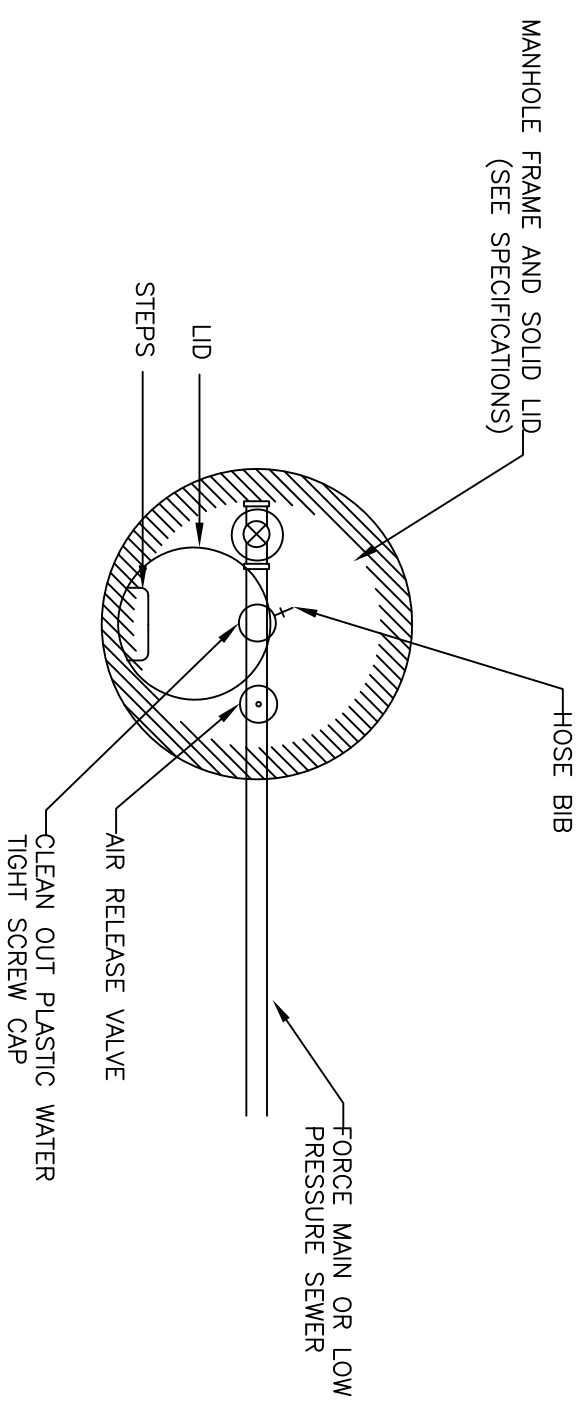
REV

A

CRANE

PUMPS & SYSTEMS

BARNES



HDPE PIPE REQUIRES ELECTROFUSED TRANSITION ADAPTERS (COMPRESSION FITTINGS NOT RECOMMENDED)

THIS DRAWING IS APPROVED FOR UNCONTROLLED DISTRIBUTION

TITLE

TERMINAL CLEANOUT WITH AIR RELEASE VALVE
OR AIR RELEASE AND VACUUM RELEASE VALVE

CAGE NO

96046

AS A RESULT OF BARNES CONSTANT PRODUCT IMPROVEMENT PROGRAM, PRODUCT CHANGES MAY OCCUR. AS SUCH, BARNES RESERVES THE RIGHT TO CHANGE PRODUCT WITHOUT PRIOR WRITTEN NOTIFICATION

DWG NO

DRAWING NO.

REV

A

CRANE

PUMPS & SYSTEMS

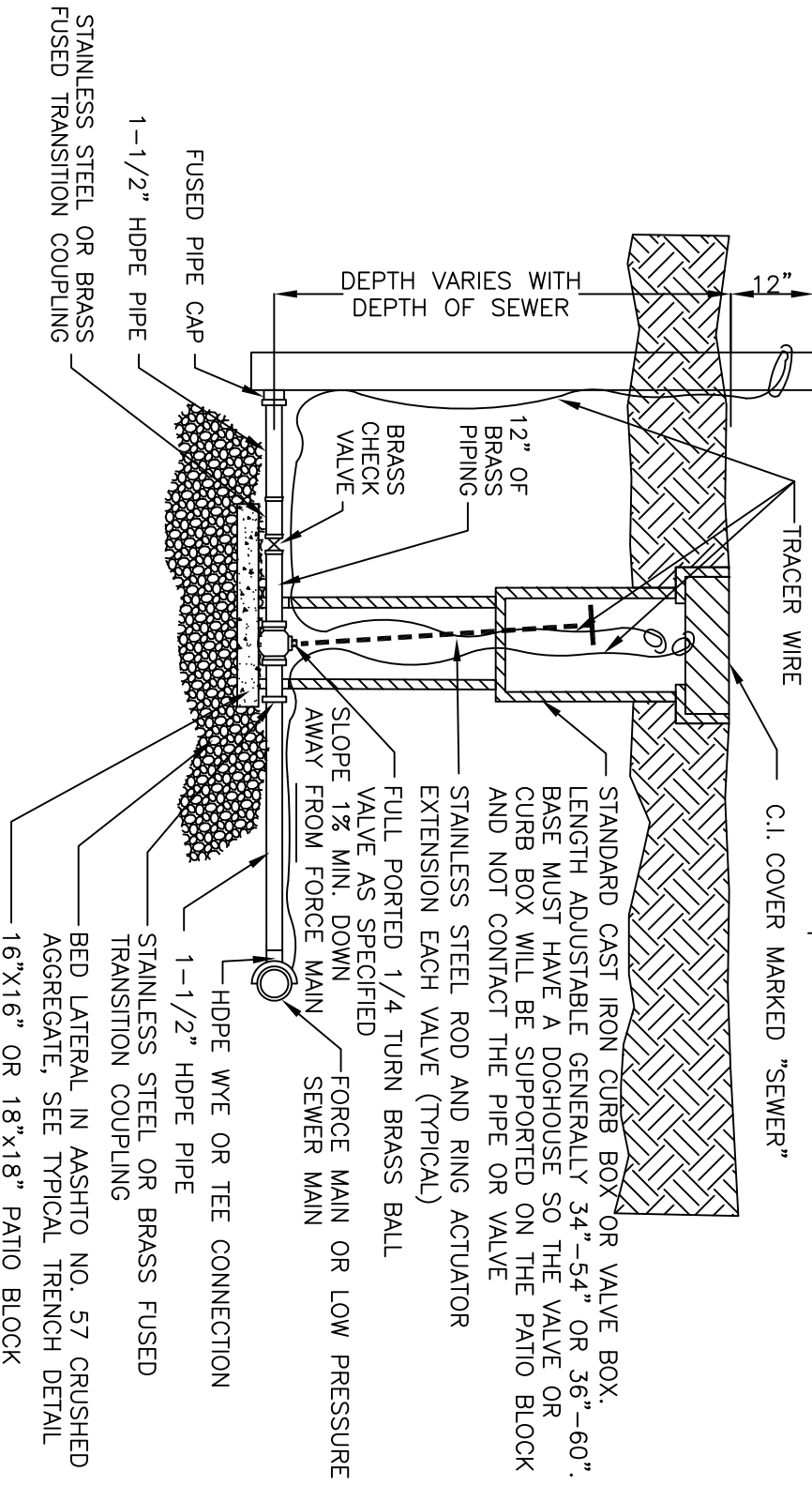
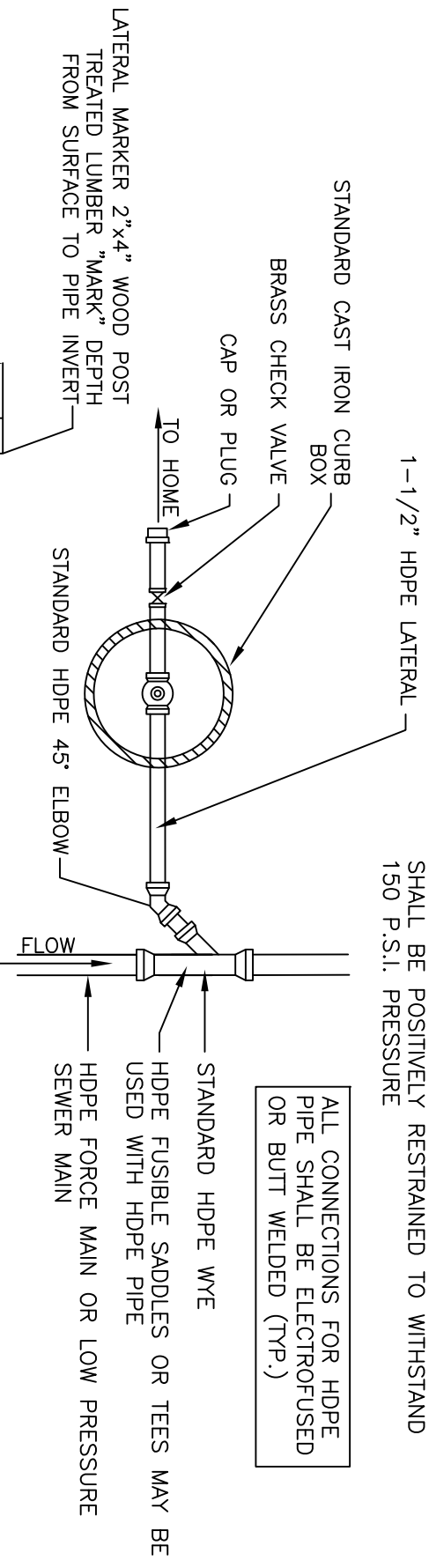
BARNES

THIS PRINT IS AND CONTAINS PROPRIETARY INFORMATION OWNED EXCLUSIVELY BY CRANE PUMPS & SYSTEMS, INC. THIS RESTRICTION INCLUDES, BUT IS NOT LIMITED TO THE CONDITION THAT THIS PRINT WILL ONLY BE USED AS A RECORD OR TO IDENTIFY OR INSPECT PARTS OR FOR OTHER INFORMATION PURPOSES, AND WILL NOT BE USED TO MANUFACTURE OR PROCURE THE MANUFACTURE OF THE PARTS SHOWN IN THIS PRINT BY ANY OTHER SOURCE THAN CRANE PUMPS & SYSTEMS, INC.

WWW.BARNESPUMPS.COM

SHEET 1 OF 1

NOTE:
 WYES, BENDS, CAPS AND OTHER FITTINGS,
 AS WELL AS PRESSURE SEWER LATERAL PIPING,
 SHALL BE POSITIVELY RESTRAINED TO WITHSTAND
 150 P.S.I. PRESSURE



- NOTES:**
1. EXTEND LATERAL TO PROPERTY LINE IN CORRIDOR INDICATED ON RIGHT-OF-WAY OBTAINED BY MUNICIPALITY.
 2. CONTACT PROPERTY OWNER AHEAD OF LAYING PRESSURE SEWER TO DETERMINE THE MOST CONVENIENT LOCATION OF CONNECTION AND LATERAL LINE.

THIS PRINT IS AND CONTAINS PROPRIETARY INFORMATION OWNED EXCLUSIVELY BY CRANE PUMPS & SYSTEMS, INC. THIS RESTRICTION INCLUDES, BUT IS NOT LIMITED TO THE CONDITION THAT THIS PRINT WILL ONLY BE USED AS A RECORD OR TO IDENTIFY OR INSPECT PARTS OR FOR OTHER INFORMATION PURPOSES, AND WILL NOT BE USED TO MANUFACTURE OR PROCURE THE MANUFACTURE OF THE PARTS SHOWN IN THIS PRINT BY ANY OTHER SOURCE THAN CRANE PUMPS & SYSTEMS, INC.

THIS DRAWING IS APPROVED FOR UNCONTROLLED DISTRIBUTION

AS A RESULT OF BARNES CONSTANT PRODUCT IMPROVEMENT PROGRAM, PRODUCT CHANGES MAY OCCUR. AS SUCH, BARNES RESERVES THE RIGHT TO CHANGE PRODUCT WITHOUT PRIOR WRITTEN NOTIFICATION

WWW.BARNESPUMPS.COM

TITLE: **TYPICAL RESIDENTIAL SERVICE CONNECTION**

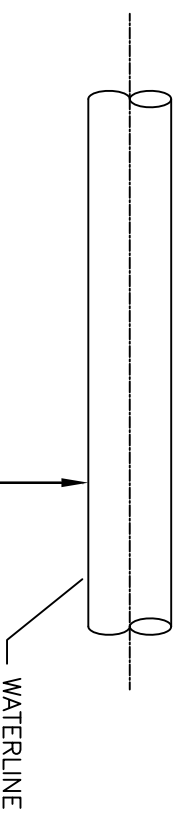
CAGE NO: **96046**

DWG NO: **DRAWING NO.**

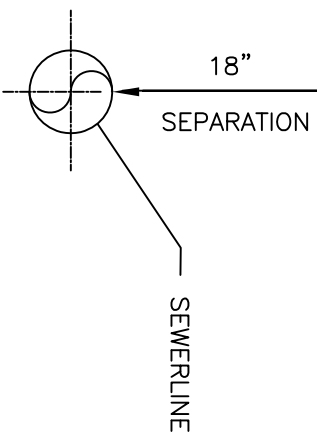
REV: **A**

CRANE PUMPS & SYSTEMS

BARNES



NOTE: WHEN PROPER VERTICAL SEPARATION, AS SHOWN, IS NOT POSSIBLE, THE WATERLINE SHALL BE CONCRETE ENCASED FOR A LENGTH OF 10' ON EITHER SIDE OF THE SEWERLINE. (AIR TEST FOR TIGHTNESS)

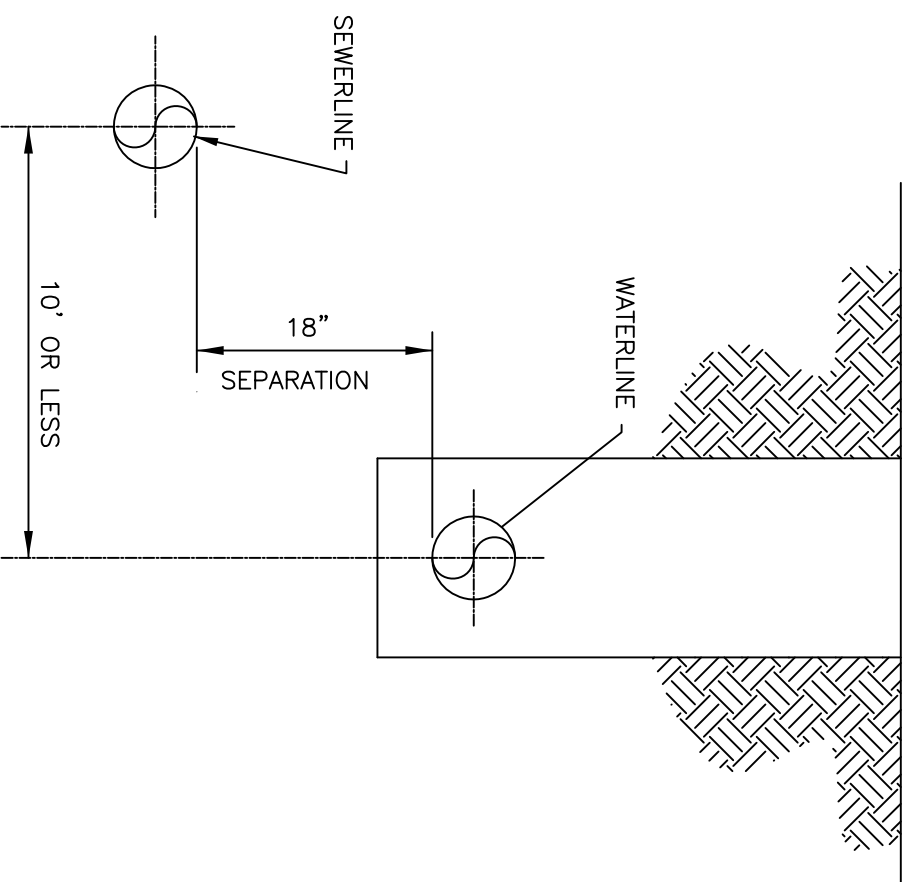


1) PENNSYLVANIA DEPARTMENT OF ENVIRONMENTAL PROTECTION REGULATIONS REQUIRE THE FOLLOWING SEPARATIONS BETWEEN SEWER LINES AND WATER LINES. THE CONTRACTOR SHALL ADHERE TO THESE REQUIREMENTS AND THE ENGINEER SHALL BE NOTIFIED IN ANY CASE WHERE SUCH REGULATIONS MAY BE VIOLATED.

A. HORIZONTAL SEPARATION – WHENEVER POSSIBLE, SEWERS SHOULD BE LAID AT LEAST 10 FEET, HORIZONTALLY, FROM ANY EXISTING OR PROPOSED WATER MAINS. SHOULD LOCAL CONDITIONS PREVENT A LATERAL SEPARATION OF 10 FEET, A SEWER MAY BE LAID CLOSER THAN 10 FEET TO A WATER MAIN IF:

- (1) IT IS LAID IN A SEPARATE TRENCH; OR IF
- (2) IT IS LAID IN THE SAME TRENCH, WITH THE WATER MAIN LOCATED AT ONE SIDE ON A BENCH OF UNDISTURBED EARTH; AND IF
- (3) IN EITHER CASE THE ELEVATION OF THE TOP (CROWN) OF THE SEWER IS AT LEAST 18 INCHES BELOW THE BOTTOM (INVERT) OF THE WATER MAIN.

B. VERTICAL SEPARATION – WHENEVER SEWERS MUST CROSS UNDER WATER MAINS, THE SEWER SHALL BE LAID AT SUCH AN ELEVATION THAT THE TOP OF THE SEWER IS AT LEAST 18 INCHES BELOW THE WATER MAIN. WHEN THE ELEVATION OF THE SEWER CANNOT BE VARIED TO MEET THE ABOVE REQUIREMENTS, THE WATER MAIN SHALL BE RELOCATED TO PROVIDE THIS SEPARATION, FOR A DISTANCE OF 10 FEET EXTENDING ON EACH SIDE OF THE SEWER. IF POSSIBLE, ONE FULL LENGTH OF WATER MAIN SHOULD BE CENTERED OVER THE SEWER SO THAT BOTH JOINTS WILL BE AS FAR FROM THE SEWER AS POSSIBLE. WHERE LESS THAN AN 18" VERTICAL SEPARATION EXISTS BETWEEN THE WATER AND SEWER LINE, THE SEWER LINE SHALL BE CONCRETE ENCASED 10 FEET ON BOTH SIDES OF THE WATER MAIN. IF POSSIBLE, SEWER CROSSING WATER MAINS SHALL BE CONSTRUCTED SO THAT THE SEWER JOINTS WILL BE EQUIDISTANT AND AS FAR AS POSSIBLE FROM THE WATER MAIN JOINTS. WHERE A WATER MAIN CROSSES UNDER A SEWER, ADEQUATE STRUCTURAL SUPPORT SHALL BE PROVIDED FOR THE SEWER TO PREVENT DAMAGE TO THE WATER MAIN.



NOTE: VERTICAL SEPARATION NOT REQUIRED FOR DISTANCES BETWEEN LINES EXCEEDING 10 FEET.

THIS DRAWING IS APPROVED FOR UNCONTROLLED DISTRIBUTION

AS A RESULT OF BARNES CONSTANT PRODUCT IMPROVEMENT PROGRAM, PRODUCT CHANGES MAY OCCUR. AS SUCH, BARNES RESERVES THE RIGHT TO CHANGE PRODUCT WITHOUT PRIOR WRITTEN NOTIFICATION

WWW.BARNESPUMPS.COM SHEET 1 OF 1

TITLE

TYPICAL RESIDENTIAL SERVICE CONNECTION

CAGE NO

96046

DWG NO

DRAWING NO.

REV

A

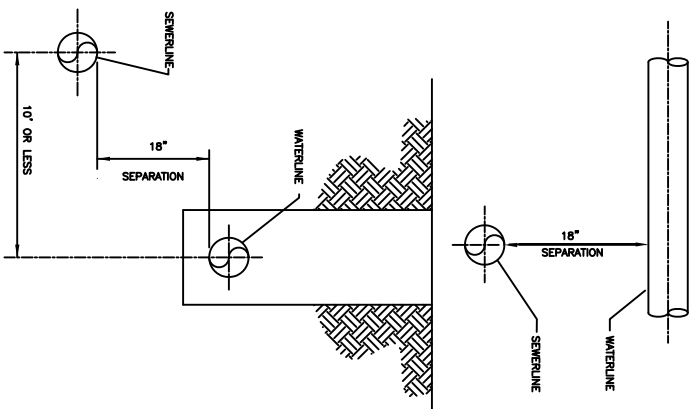
CRANE®

PUMPS & SYSTEMS

BARNES®

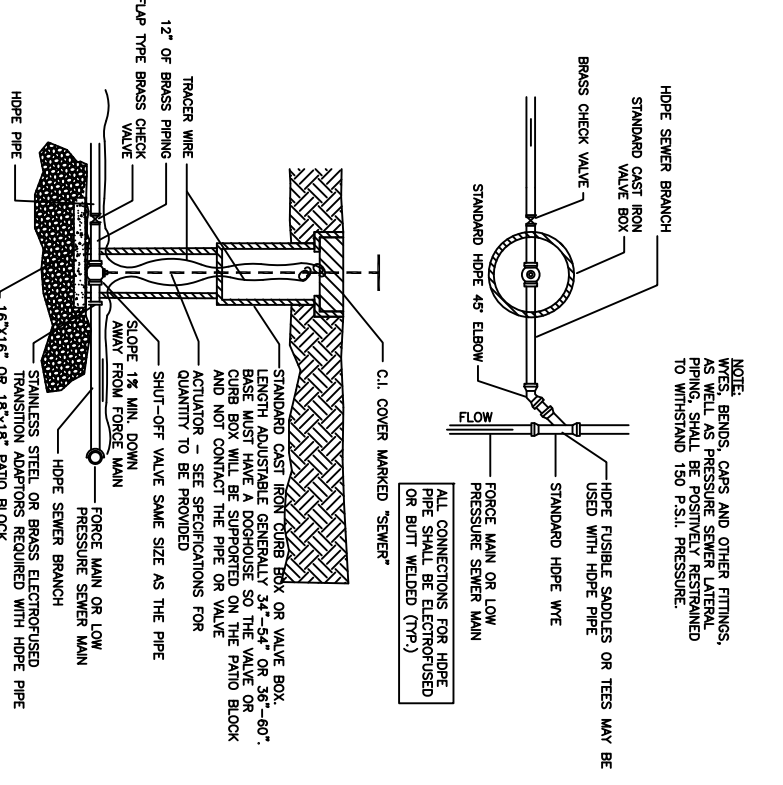
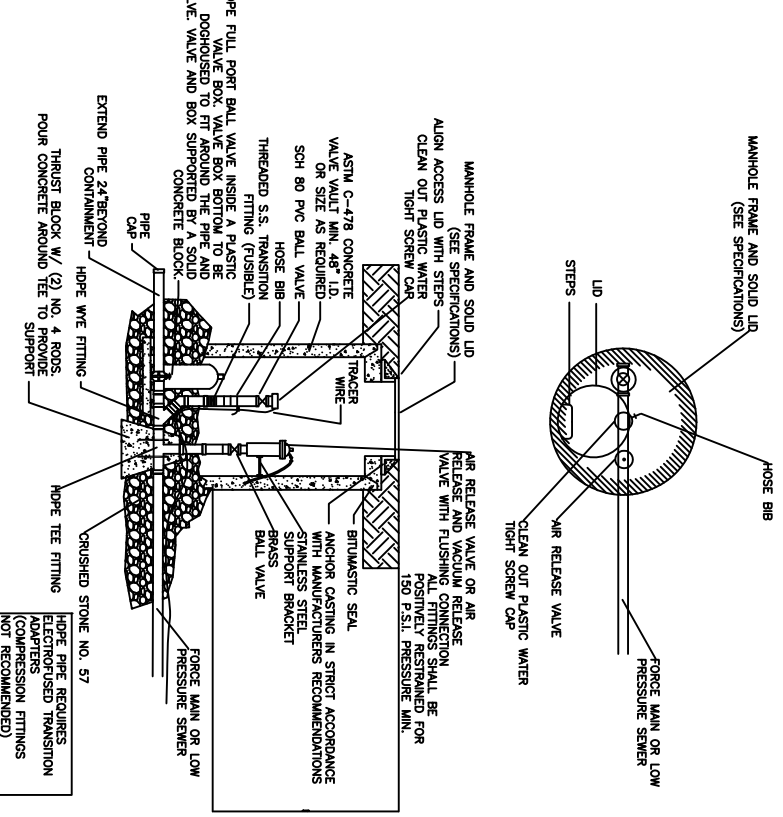
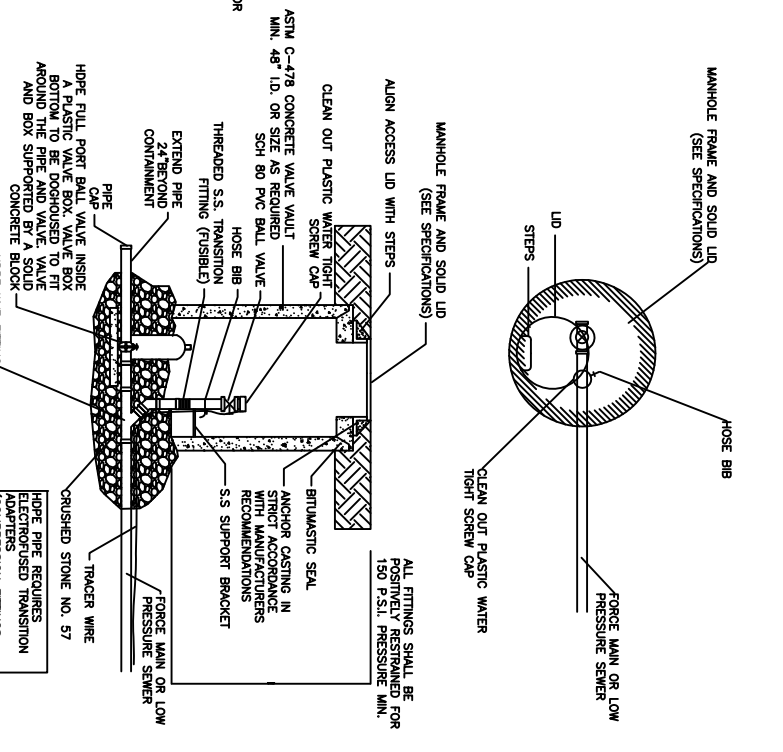
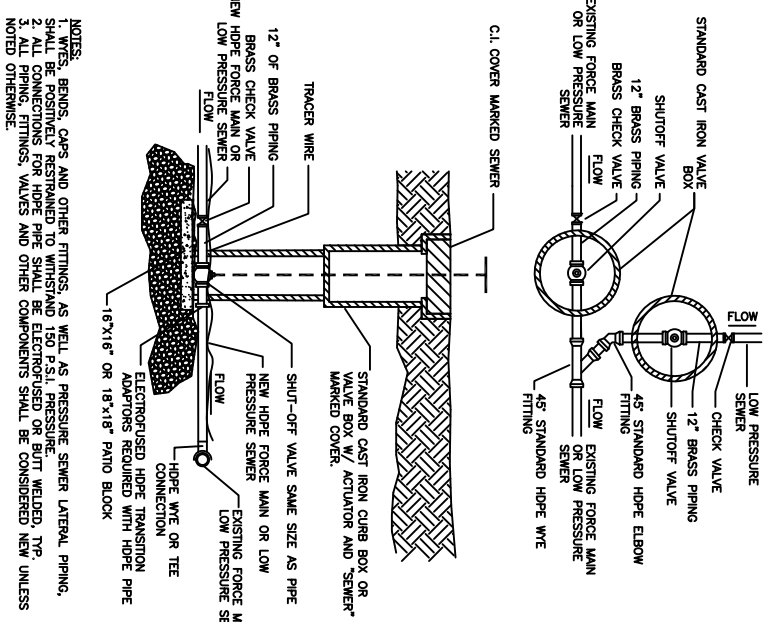
THIS PRINT IS AND CONTAINS PROPRIETARY INFORMATION OWNED EXCLUSIVELY BY CRANE PUMPS & SYSTEMS, INC. THIS RESTRICTION INCLUDES, BUT IS NOT LIMITED TO THE CONDITION THAT THIS PRINT WILL ONLY BE USED AS A RECORD OR TO IDENTIFY OR INSPECT PARTS OR FOR OTHER INFORMATION PURPOSES, AND WILL NOT BE USED TO MANUFACTURE OR PROCURE THE MANUFACTURE OF THE PARTS SHOWN IN THIS PRINT BY ANY OTHER SOURCE THAN CRANE PUMPS & SYSTEMS, INC.

NOTE: WHEN PROPER VERTICAL SEPARATION IS NOT MAINTAINED, THE WATER MAIN SHALL BE CONCRETE ENCASED FOR A LENGTH OF 10' ON EITHER SIDE OF THE SEWERLINE (AIR TEST FOR TIGHTNESS)

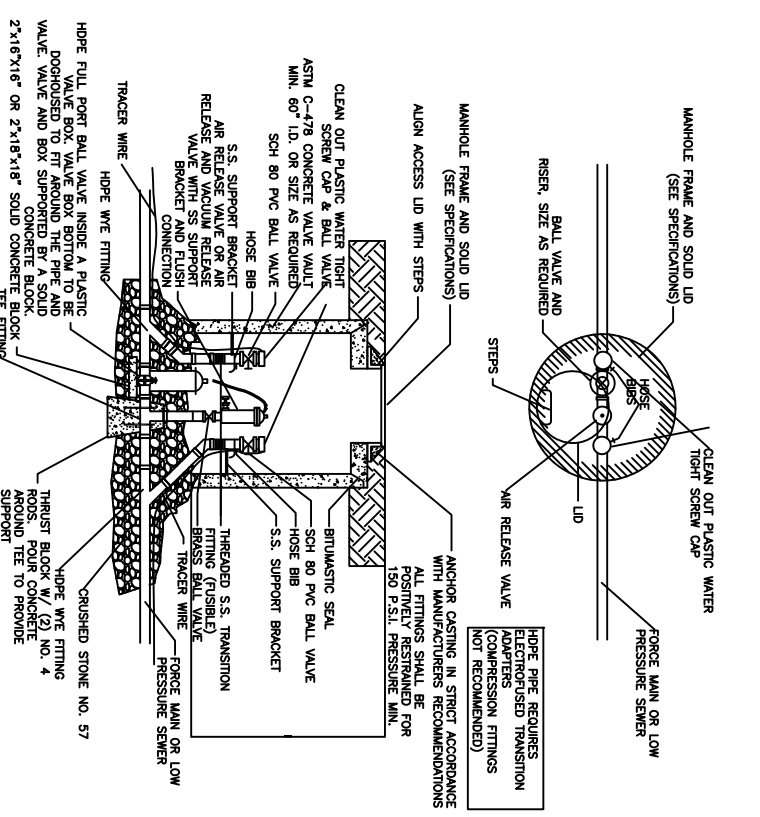


1) PENNSYLVANIA DEPARTMENT OF ENVIRONMENTAL PROTECTION REGULATIONS REQUIRE THE FOLLOWING PROTECTION OF WATER MAINS FROM SEWER LATERAL PIPING AND THE ENGINEER SHALL BE NOTIFIED IN ANY CASE WHERE HORIZONTAL SEPARATION IS REQUIRED. WHERE POSSIBLE SEWERS SHOULD BE LAID AT LEAST 10 FEET FROM WATER MAINS. WHERE HORIZONTAL SEPARATION IS NOT MAINTAINED, THE WATER MAIN SHALL BE CONCRETE ENCASED FOR A LENGTH OF 10' ON EITHER SIDE OF THE SEWERLINE (AIR TEST FOR TIGHTNESS).
 2) IF LAID IN THE SAME TRENCH WITH A BRANCH OF UNDISTURBED EARTH, AND IF THE WATER MAIN IS AT LEAST 18 INCHES FROM THE SEWER (VERTICAL) OR THE SEWER IS AT LEAST 18 INCHES FROM THE WATER MAIN, SEWER LATERAL PIPING SHALL BE LAID AT SUCH AN ELEVATION THAT THE TOP OF THE SEWER IS AT LEAST 18 INCHES ABOVE THE WATER MAIN. THE WATER MAIN SHALL BE PROTECTED BY A SOLID CONCRETE BLOCK OR CURB BOX WITH A MINIMUM WIDTH OF 18 INCHES. THE FULL LENGTH OF WATER MAIN SHOULD BE CENTERED OVER THE SEWER. IF POSSIBLE, ONE FULL LENGTH OF WATER MAIN SHOULD BE CENTERED OVER THE SEWER. IF NOT POSSIBLE, WHERE LESS THAN AN 18" VERTICAL SEPARATION EXISTS, THE SEWER LINE SHALL BE CONCRETE ENCASED TO THE SEWER LINE. THE CONCRETE ENCASEMENT SHALL BE LAID ON BOTH SIDES OF THE WATER MAIN. IF POSSIBLE, CONCRETE ENCASEMENT SHALL BE LAID ON ONE SIDE OF THE WATER MAIN AND AS FAR AS POSSIBLE FROM THE WATER MAIN JOINTS. WHERE A WATER MAIN SUPPORT SHALL BE PROVIDED FOR THE SEWER TO PREVENT DAMAGE TO THE WATER MAIN.

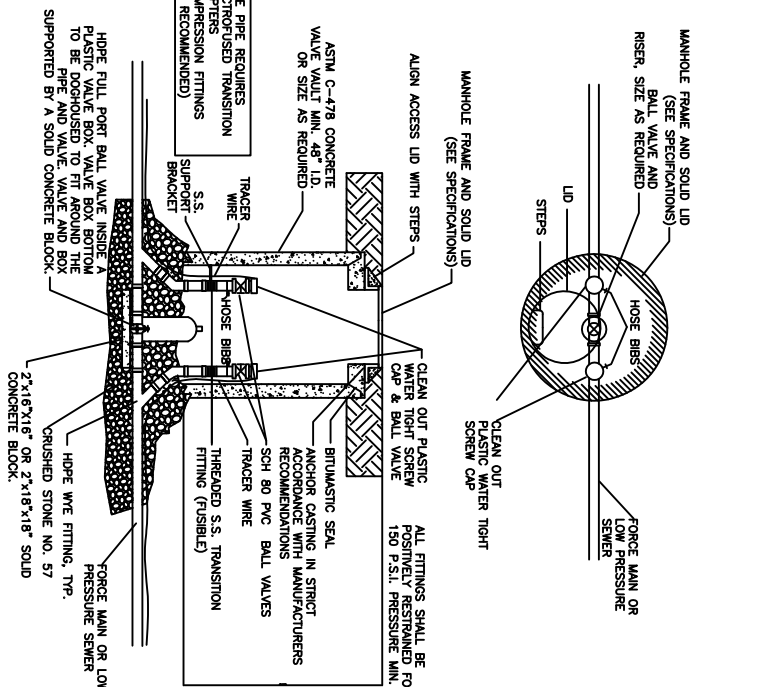
SEPARATION OF SEWER AND WATER PIPELINES



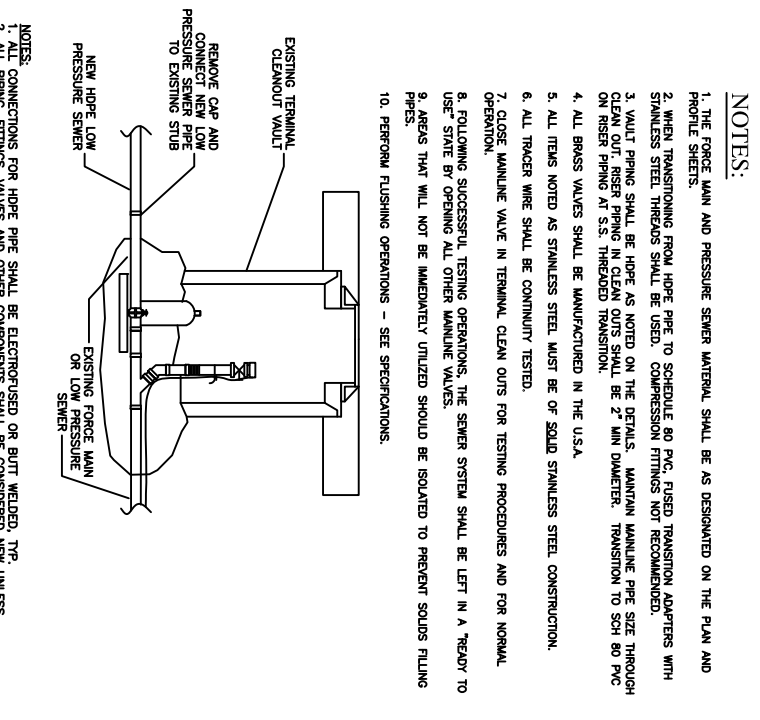
DOUBLE CLEAN OUT W/ AIR RELEASE VALVE OR AIR RELEASE AND VACUUM RELEASE VALVE



INLINE DOUBLE CLEANOUT (PRESSURE)



NEW LOW PRESSURE SEWER CONNECTION AT EXISTING TERMINAL CLEANOUT



NEW PRESSURE SEWER BRANCH CONNECTION TO EXISTING FORCE MAIN OR LOW PRESSURE SEWER

TERMINAL CLEANOUT (PRESSURE)

TERMINAL CLEAN OUT W/ AIR RELEASE VALVE OR AIR RELEASE AND VACUUM RELEASE VALVE

TYPICAL PRESSURE SEWER BRANCH WITH SHUT-OFF VALVE AND CHECK VALVE

THIS DRAWING IS APPROVED FOR UNCONTROLLED DISTRIBUTION

PRESSURE SEWER PIPING LAYOUT

CAGE NO

96046

THIS PRINT IS AND CONTAINS PROPRIETARY INFORMATION OWNED EXCLUSIVELY BY CRANE PUMPS & SYSTEMS, INC. THIS RESTRICTION INCLUDES, BUT IS NOT LIMITED TO THE CONDITION THAT THIS PRINT WILL ONLY BE USED AS A RECORD OR TO IDENTIFY OR INSPECT PARTS OR FOR OTHER INFORMATION PURPOSES, AND WILL NOT BE USED TO MANUFACTURE OR PROCURE THE MANUFACTURE OF THE PARTS SHOWN IN THIS PRINT BY ANY OTHER SOURCE THAN CRANE PUMPS & SYSTEMS, INC.

AS A RESULT OF BARNES CONSTANT PRODUCT IMPROVEMENT PROGRAM, PRODUCT CHANGES MAY OCCUR. AS SUCH, BARNES RESERVES THE RIGHT TO CHANGE PRODUCT WITHOUT PRIOR WRITTEN NOTIFICATION

TITLE

DWG NO

REV

A

CRANE PUMPS & SYSTEMS BARNES

WWW.BARNESPUMPS.COM

SHEET 1 OF 1

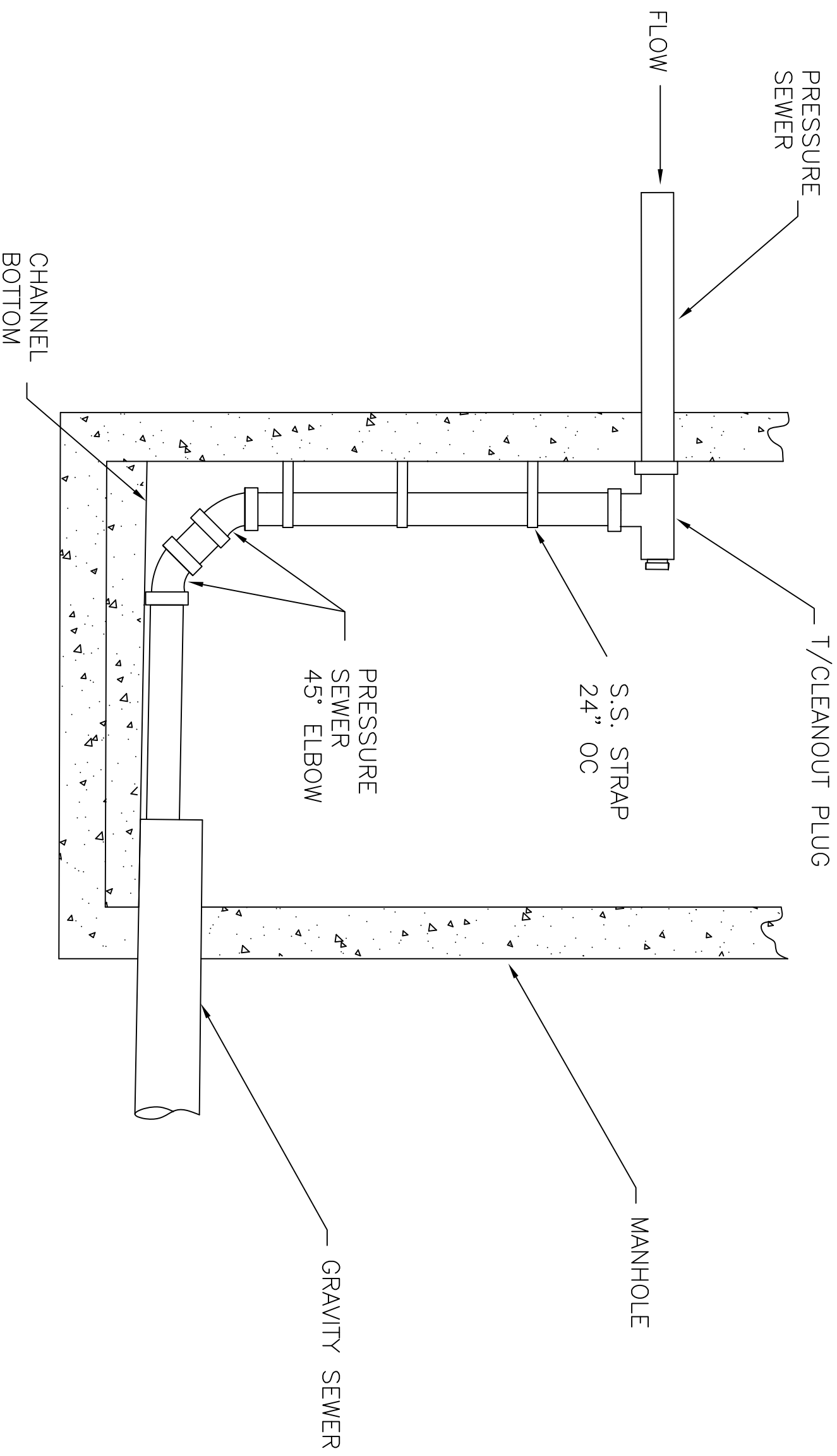
DWG NO

DRAWING NO.

REV

A

CRANE PUMPS & SYSTEMS BARNES



THIS PRINT IS AND CONTAINS PROPRIETARY INFORMATION OWNED EXCLUSIVELY BY CRANE PUMPS & SYSTEMS, INC. THIS RESTRICTION INCLUDES, BUT IS NOT LIMITED TO THE CONDITION THAT THIS PRINT WILL ONLY BE USED AS A RECORD OR TO IDENTIFY OR INSPECT PARTS OR FOR OTHER INFORMATION PURPOSES, AND WILL NOT BE USED TO MANUFACTURE OR PROCURE THE MANUFACTURE OF THE PARTS SHOWN IN THIS PRINT BY ANY OTHER SOURCE THAN CRANE PUMPS & SYSTEMS, INC.

THIS DRAWING IS APPROVED FOR UNCONTROLLED DISTRIBUTION

TITLE
PRESSURE SEWER DROP DISCHARGE AT MANHOLE

CAGE NO

96046

AS A RESULT OF BARNES CONSTANT PRODUCT IMPROVEMENT PROGRAM, PRODUCT CHANGES MAY OCCUR. AS SUCH, BARNES RESERVES THE RIGHT TO CHANGE PRODUCT WITHOUT PRIOR WRITTEN NOTIFICATION

WWW.BARNESPUMPS.COM

SHEET 1 OF 1

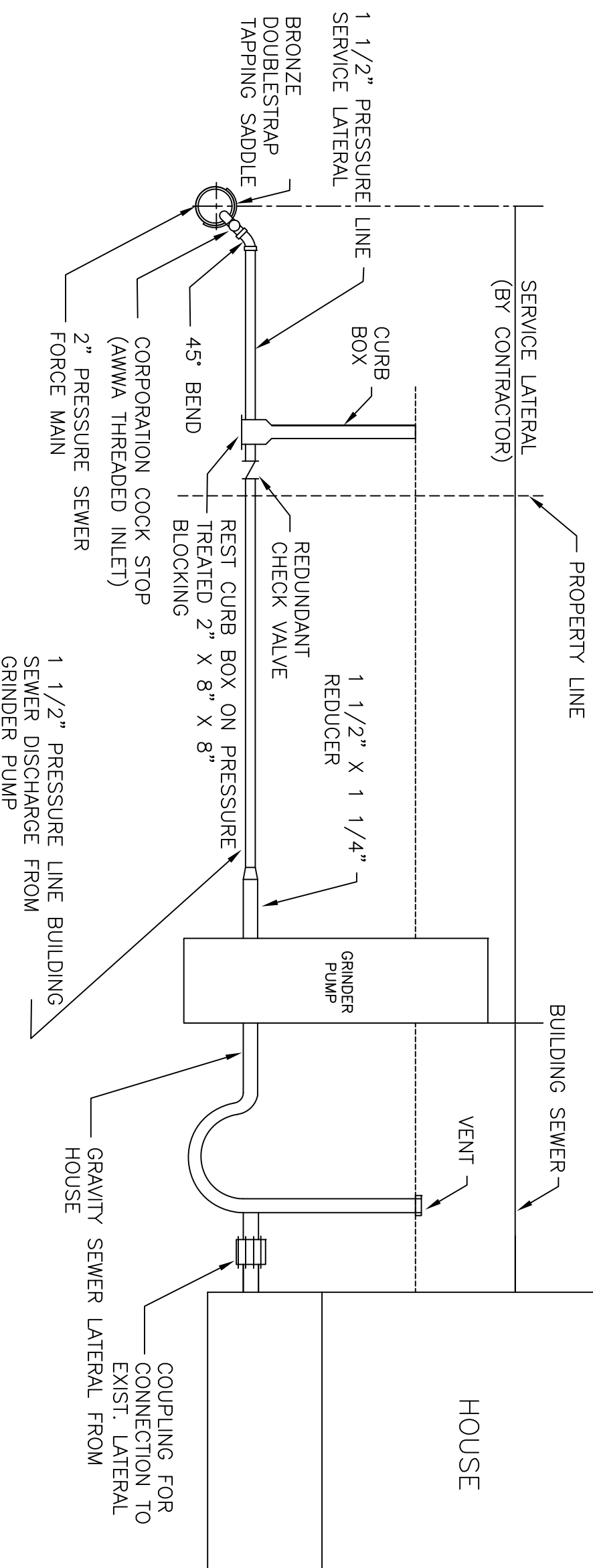
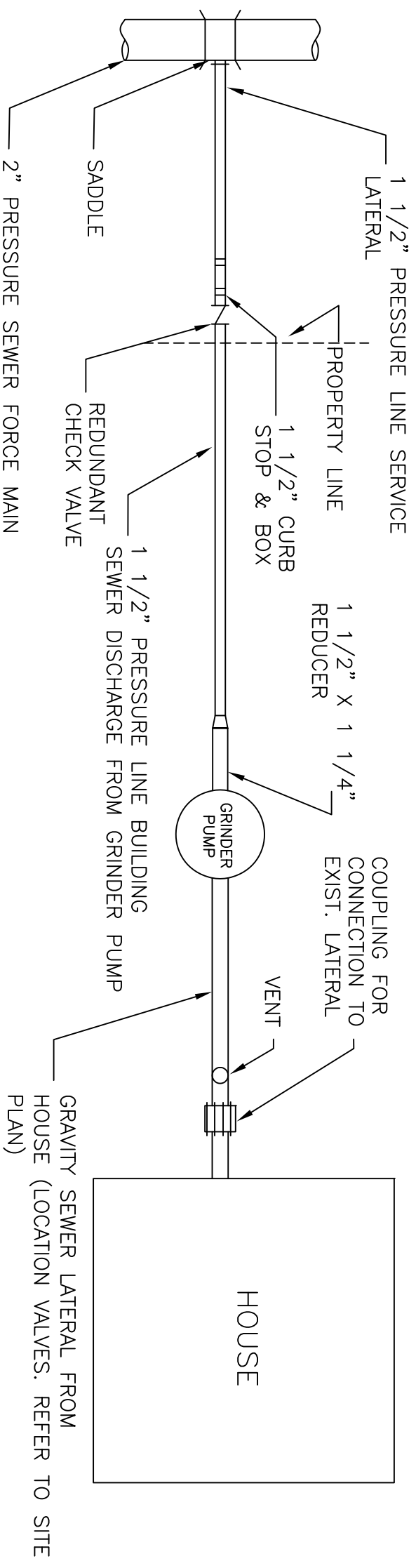
DWG NO
DRAWING NO.

REV
A

CRANE

PUMPS & SYSTEMS

BARNES



THIS PRINT IS AND CONTAINS PROPRIETARY INFORMATION OWNED EXCLUSIVELY BY CRANE PUMPS & SYSTEMS, INC. THIS RESTRICTION INCLUDES, BUT IS NOT LIMITED TO THE CONDITION THAT THIS PRINT WILL ONLY BE USED AS A RECORD OR TO IDENTIFY OR INSPECT PARTS OR FOR OTHER INFORMATION PURPOSES, AND WILL NOT BE USED TO MANUFACTURE OR PROCURE THE MANUFACTURE OF THE PARTS SHOWN IN THIS PRINT BY ANY OTHER SOURCE THAN CRANE PUMPS & SYSTEMS, INC.

THIS DRAWING IS APPROVED FOR UNCONTROLLED DISTRIBUTION

AS A RESULT OF BARNES CONSTANT PRODUCT IMPROVEMENT PROGRAM, PRODUCT CHANGES MAY OCCUR. AS SUCH, BARNES RESERVES THE RIGHT TO CHANGE PRODUCT WITHOUT PRIOR WRITTEN NOTIFICATION

WWW.BARNESPUMPS.COM

SHEET 1 OF 1

TITLE

GRINDER PUMP DISCHARGE CONNECTION
TO A PRESSURE SEWER FORCE MAIN

CAGE NO

96046

DWG NO

DRAWING NO.

REV

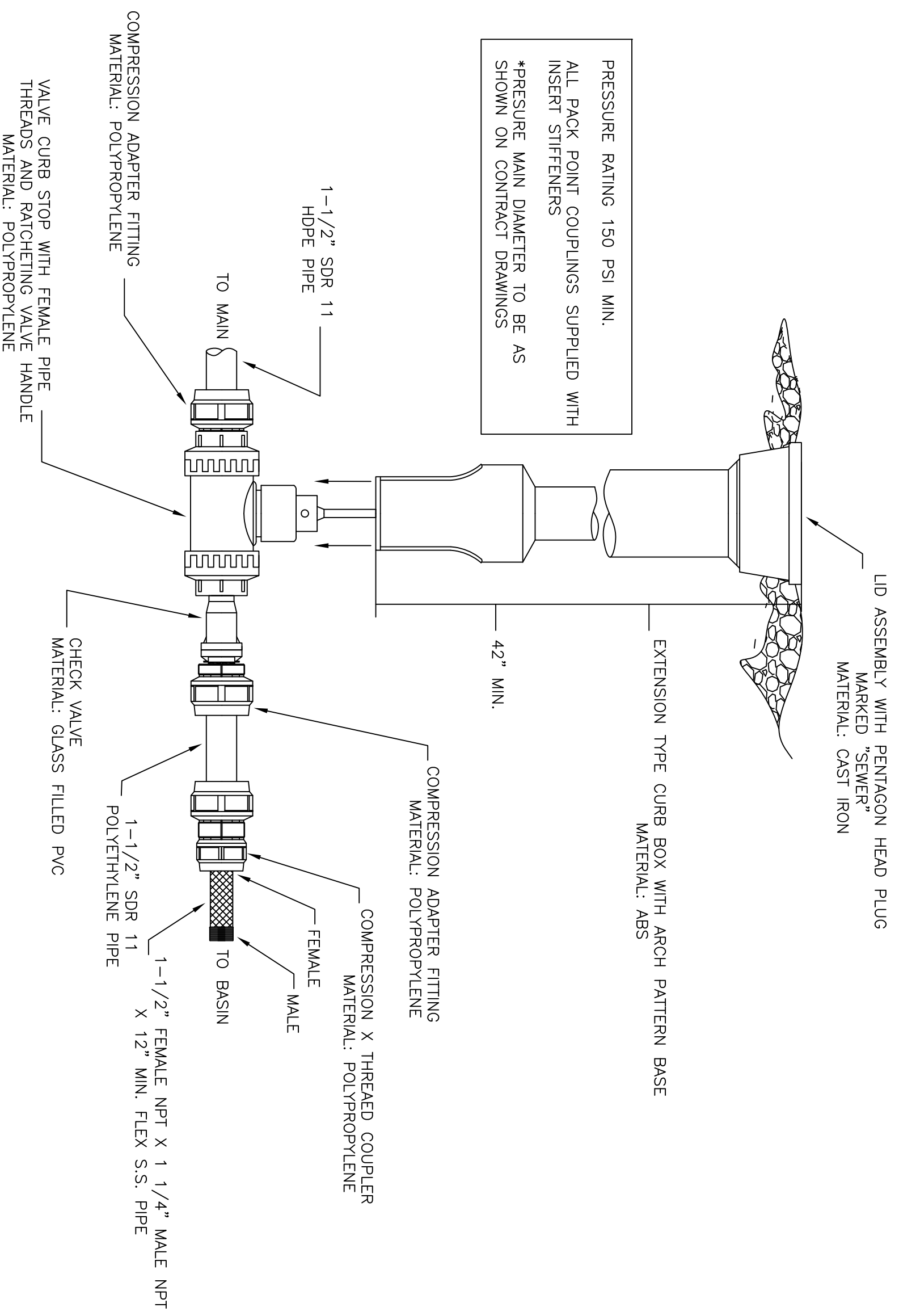
A

CRANE

PUMPS & SYSTEMS

BARNES

PRESSURE RATING 150 PSI MIN.
 ALL PACK POINT COUPLINGS SUPPLIED WITH
 INSERT STIFFENERS
 *PRESSURE MAIN DIAMETER TO BE AS
 SHOWN ON CONTRACT DRAWINGS



THIS PRINT IS AND CONTAINS PROPRIETARY INFORMATION OWNED EXCLUSIVELY
 BY CRANE PUMPS & SYSTEMS, INC. THIS RESTRICTION INCLUDES, BUT IS NOT
 LIMITED TO THE CONDITION THAT THIS PRINT WILL ONLY BE USED AS A RECORD
 OR TO IDENTIFY OR INSPECT PARTS OR FOR OTHER INFORMATION PURPOSES,
 AND WILL NOT BE USED TO MANUFACTURE OR PROCURE THE MANUFACTURE OF
 THE PARTS SHOWN IN THIS PRINT BY ANY OTHER SOURCE THAN CRANE PUMPS &
 SYSTEMS, INC.

THIS DRAWING IS APPROVED FOR UNCONTROLLED
 DISTRIBUTION

TITLE

PRESSURE SEWER LATERAL ASSEMBLY
 (NON-METALLIC TYPE)

CAGE NO

96046

AS A RESULT OF BARNES CONSTANT PRODUCT IMPROVEMENT
 PROGRAM, PRODUCT CHANGES MAY OCCUR. AS SUCH, BARNES
 RESERVES THE RIGHT TO CHANGE PRODUCT WITHOUT PRIOR
 WRITTEN NOTIFICATION

WWW.BARNESPUMPS.COM

SHEET 1 OF 1

DWG NO

DRAWING NO.

REV
 A



PUMPS & SYSTEMS

