



*reliability you can count on.....*

DAKOTAPUMP.COM



**DP-MWB Series** Above Ground  
Modular Water Booster Station

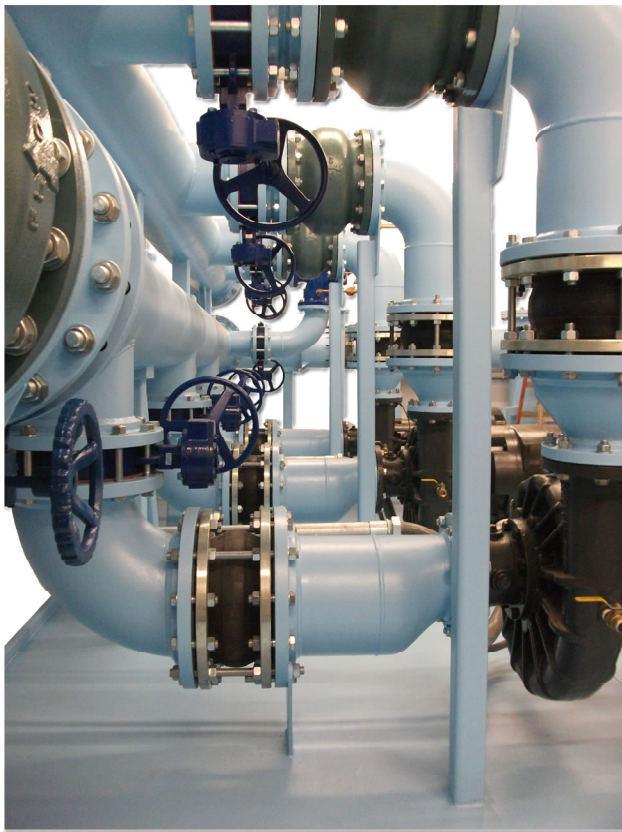


**DAKOTA PUMP INC.**

po box 947 ~ 25524 413th Ave ~ Mitchell, SD 57301 ~ ph.605.996.6636 ~ fax. 605.996.6067 ~ dakotapump.com

*The Total Solution*





**Experience the DPI Guarantee**  
- No limits, if you need it, we can build it!

## Features & Benefits:

- DPI - Connect and Go Technology
- Fast Turn Around Time From Order To Delivery
- All Systems Are Pre-Assembled & Tested
- Flow Control and, Level Control
- Traffic Loaded Designs
- Hydraulic & Electrical Controls
- Pressure Reducing
- Master Meter Station
- Controlled Environment Actuated Valves
- Modular building
- Reinforced steel base
- Vertical or horizontal water pumps
- Steel piping with weld fittings
- Butterfly valves
- Silent check valves
- Power & control panel
- Ventilation blower & heater
- Epoxy painting system
- Internal conduit and wiring
- All Buildings Built to UL Standards
- Third Party Inspected to Meet Various State Modular Building Codes



## DPI - Modular Water Booster Stations

Dakota Pump Inc. modular water booster stations are becoming more common through the packaged water booster industry. With the advantage of a single source supplier and the use of nationally recognized manufactures of pumps and major components, the modular water booster station is an excellent choice for both the Design Engineer and the end user.

Due to a variety of options and pump/piping configurations, Dakota Pump Inc. offers a wide spectrum of opportunities with the modular water booster station. Let our professional staff review your requirements and assist with the design of your next project. The opportunities are endless



## Represented By:

CW Sales Corporation

Toll Free 1-866-PUMPS (78677)

[www.cwsalescorp.com](http://www.cwsalescorp.com)

# DAKOTA PUMP INC.

The Total Solution

