

burks[®]
by Crane Pumps & Systems, Inc.

BPV Series

Capacities to 400 GPM
Heads to 1350 Feet

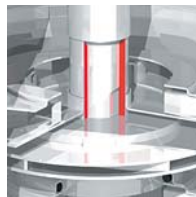


Burks BPV Series

BPV Series (304 SS)
BPVS Series (316 SS)

Shaft Sealing

Mechanical seal available in several material combinations for many applications. For models with motors larger than 7½ HP, a cartridge version is provided, which permits seal changes without removing the motor.





Features

Stainless Steel Pump Shaft

Double flat face shaft provides long lasting impeller/shaft integrity.



Suction/Discharge Casing

Entire housing made of stainless steel. Flange connections (1) are available in all sizes. Victaulic connections (2) and oval flanges with lating NPT female series.



Stainless Steel diffuser

Special design reduces internal losses, which improves the efficiency of the pump.



Sleeve Sealing

Sleeve construction ensures total compensation of thermal expansion. Specially shaped o-ring grooves for optimal sealing.

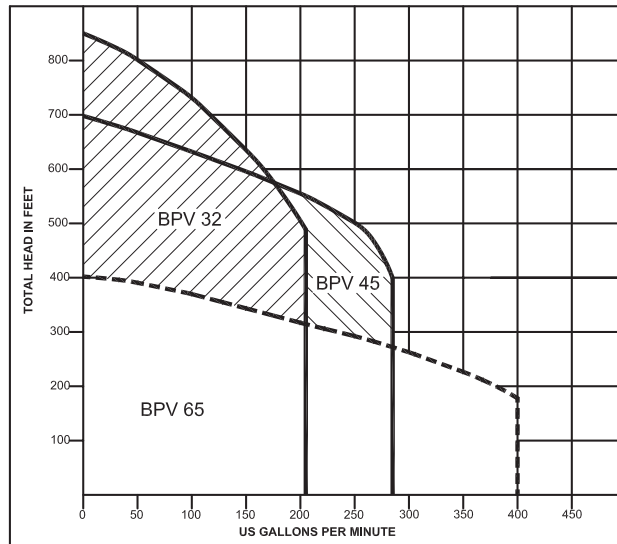
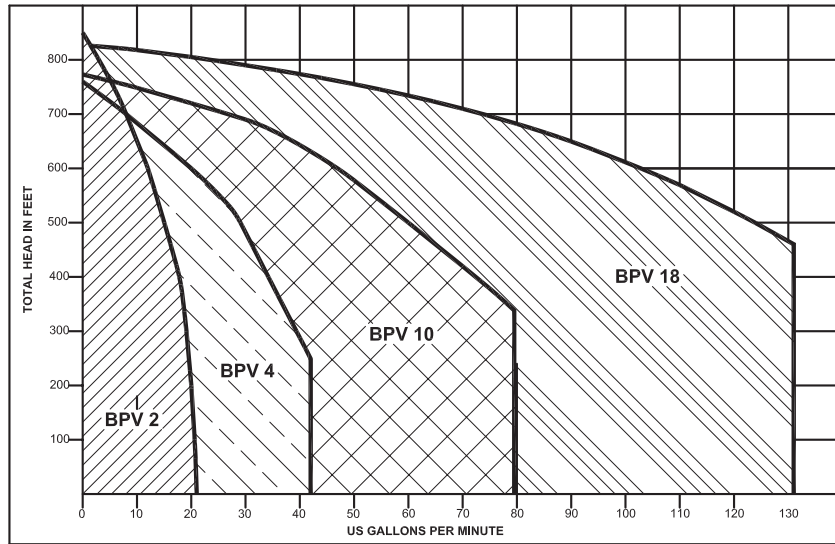
Bleed plug is specially engineered to ensure safe purging of air.



The BPVCF configuration is dimensionally interchangeable with the BPVF series. It is equipped with EPDM E-425 can O-rings for fail-safe operation during extreme temperature changes.



Range Charts



CW SALES CORPORATION
1-866-60-PUMPS
 cwsalescorp.com cwsales@cwsalescorp.com



PUMPS & SYSTEMS

www.cranepumps.com

Crane Pumps & Systems
 420 Third Street
 Piqua, Ohio 45356
 (937) 778-8947
 Fax (937) 773-7157

Crane Pumps & Systems Canada
 83 West Drive
 Brampton, Ont. Canada L6T 2J6
 (905) 457-6223
 Fax (905) 457-2650



© 2008 Crane Pumps & Systems, Inc.
 A Crane Co. Company
 Printed in U.S.A.
 BK-BPV - Rev. A (1/09)

